

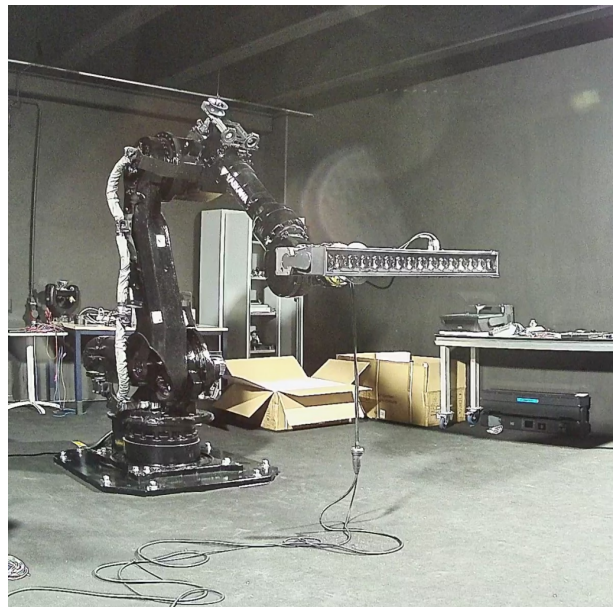


Wild Bar 16  
CRI RGB Mode  
Photometric Report

Report 2025-04-03-3

GLP German Light Products GmbH  
GLP LightLab

CRI	47
Lamp	RGBL
Serial Number	2012800015
Measurement Date	2025-04-03 10:29
Analysis SW Version	3.0.0rc7





Contents

<b>1</b>	<b>White Quality – RGBL Narrow</b>	<b>2</b>
1.1	TM-30-15 Detail Plots . . . . .	3
1.2	TLCI-2012 Results . . . . .	5
<b>2</b>	<b>White Quality – RGBL Wide</b>	<b>6</b>
2.1	TM-30-15 Detail Plots . . . . .	7
2.2	TLCI-2012 Results . . . . .	9

## 1 White Quality – RGBL Narrow

Table 1: Summary for RGBL Narrow spectral measurement results and color metrics.

Metric	Value
CCT	15 320 K
CCT $D_{uv}$	-0.033
CRI $R_a$	46
CRI $R_g$	-200
TLCI-2012	39
TM-30-15 $R_f$	130
TM-30-15 $R_g$	60
CIE 1931 x	0.287
CIE 1931 y	0.238
CIE 1960 u	0.217
CIE 1960 v	0.270

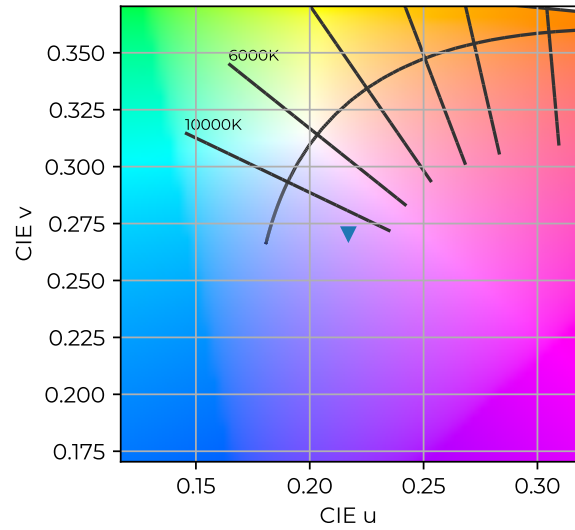


Figure 1: Color coordinates in CIE 1960 chromaticity diagram. RGBL Narrow

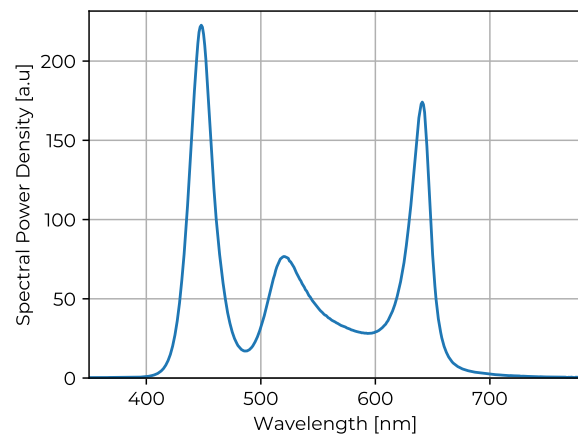
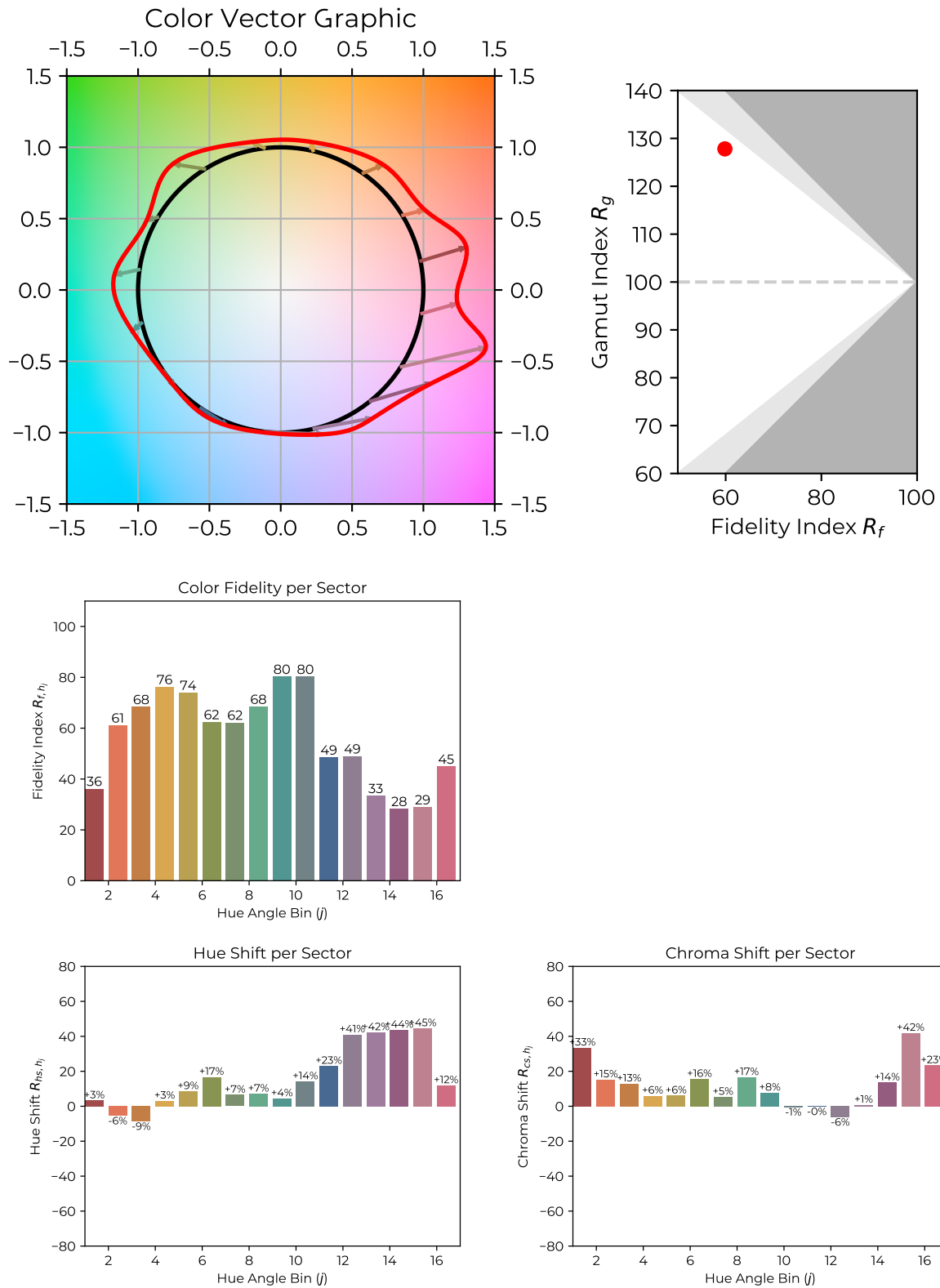
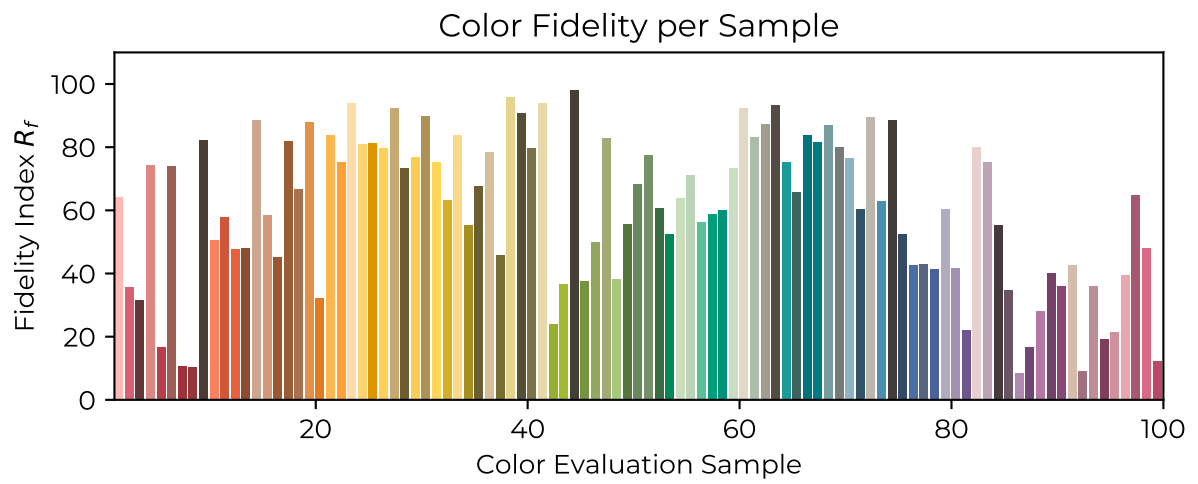


Figure 2: Measured Spectral Power Distribution of light source. RGBL Narrow

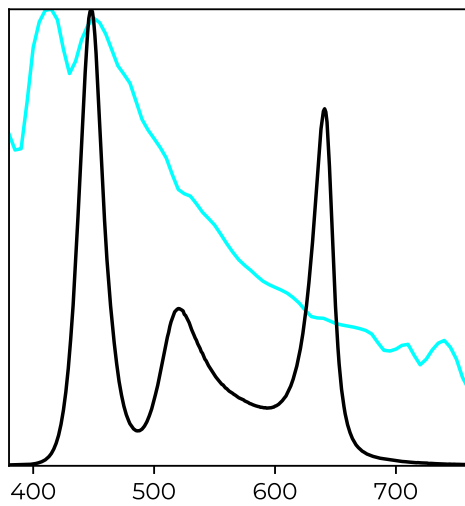
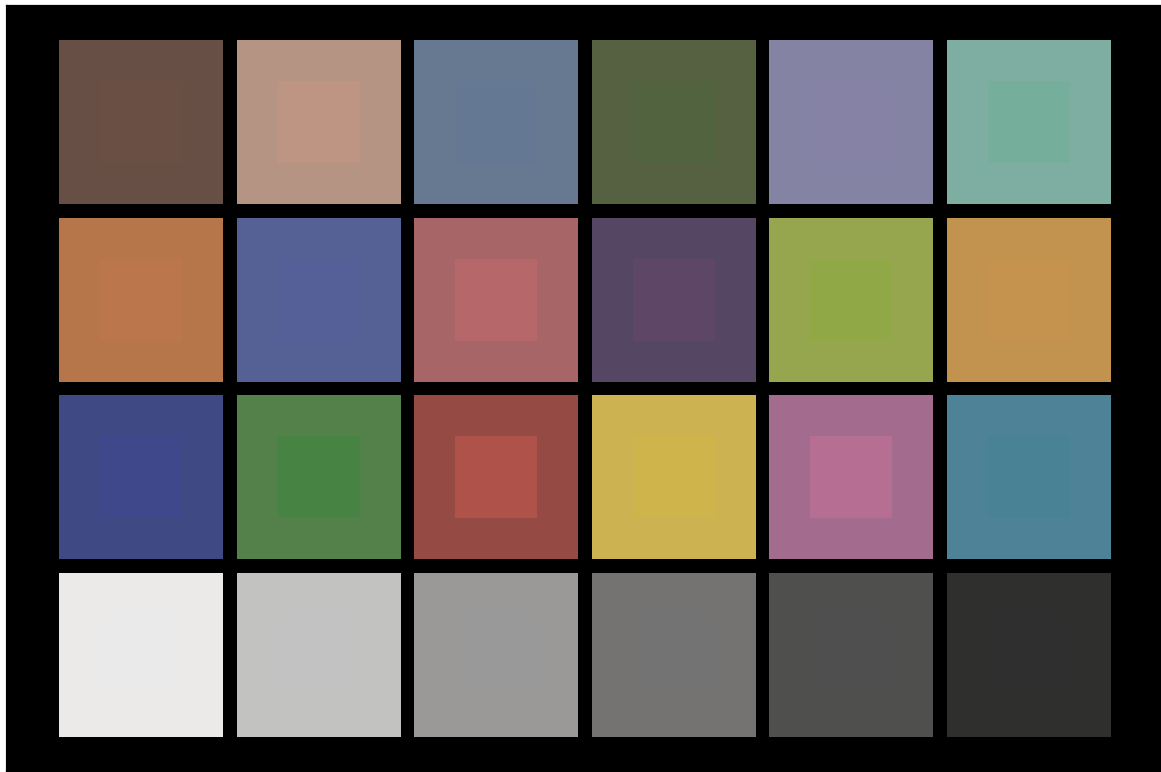
## 1.1 TM-30-15 Detail Plots





## 1.2 TLCI-2012 Results

Wild Bar 16 RGBL Narrow : CCT = D16 210 – 6.8, TLCI = 39



Sector	Lightness	Chroma	Hue
R	8	8	8
R/Y	3	3	3
Y	1	1	1
Y/G	3	3	3
G	4	4	4
G/C	5	5	5
C	3	3	3
C/B	2	2	2
B	2	2	2
B/M	2	2	2
M	5	5	5
M/R	8	8	8

## 2 White Quality – RGBL Wide

Table 2: Summary for RGBL Wide spectral measurement results and color metrics.

Metric	Value
CCT	51 390 K
CCT $D_{uv}$	-0.033
CRI $R_a$	47
CRI $R_g$	-210
TLCI-2012	40
TM-30-15 $R_f$	130
TM-30-15 $R_g$	57
CIE 1931 x	0.272
CIE 1931 y	0.221
CIE 1960 u	0.213
CIE 1960 v	0.260

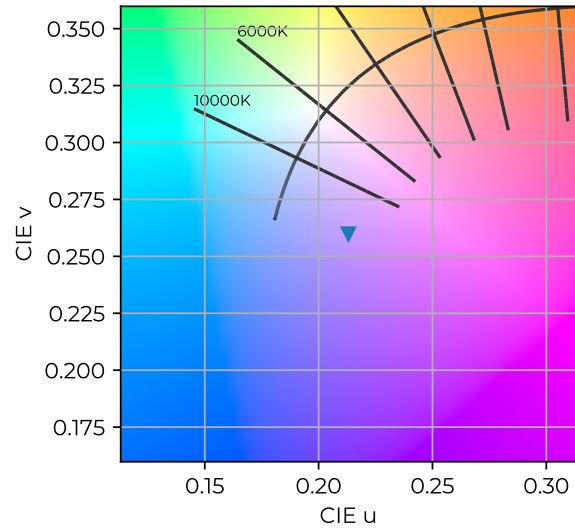


Figure 3: Color coordinates in CIE 1960 chromaticity diagram. RGBL Wide

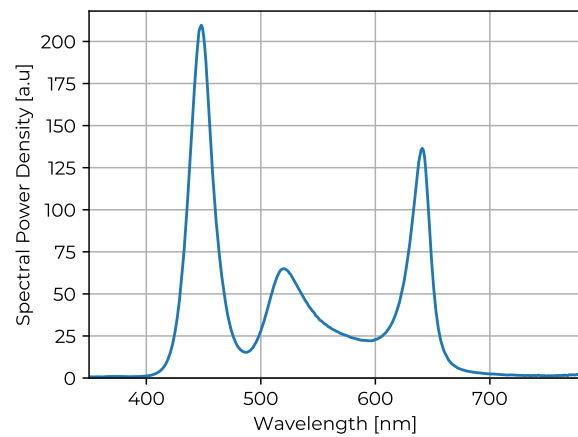
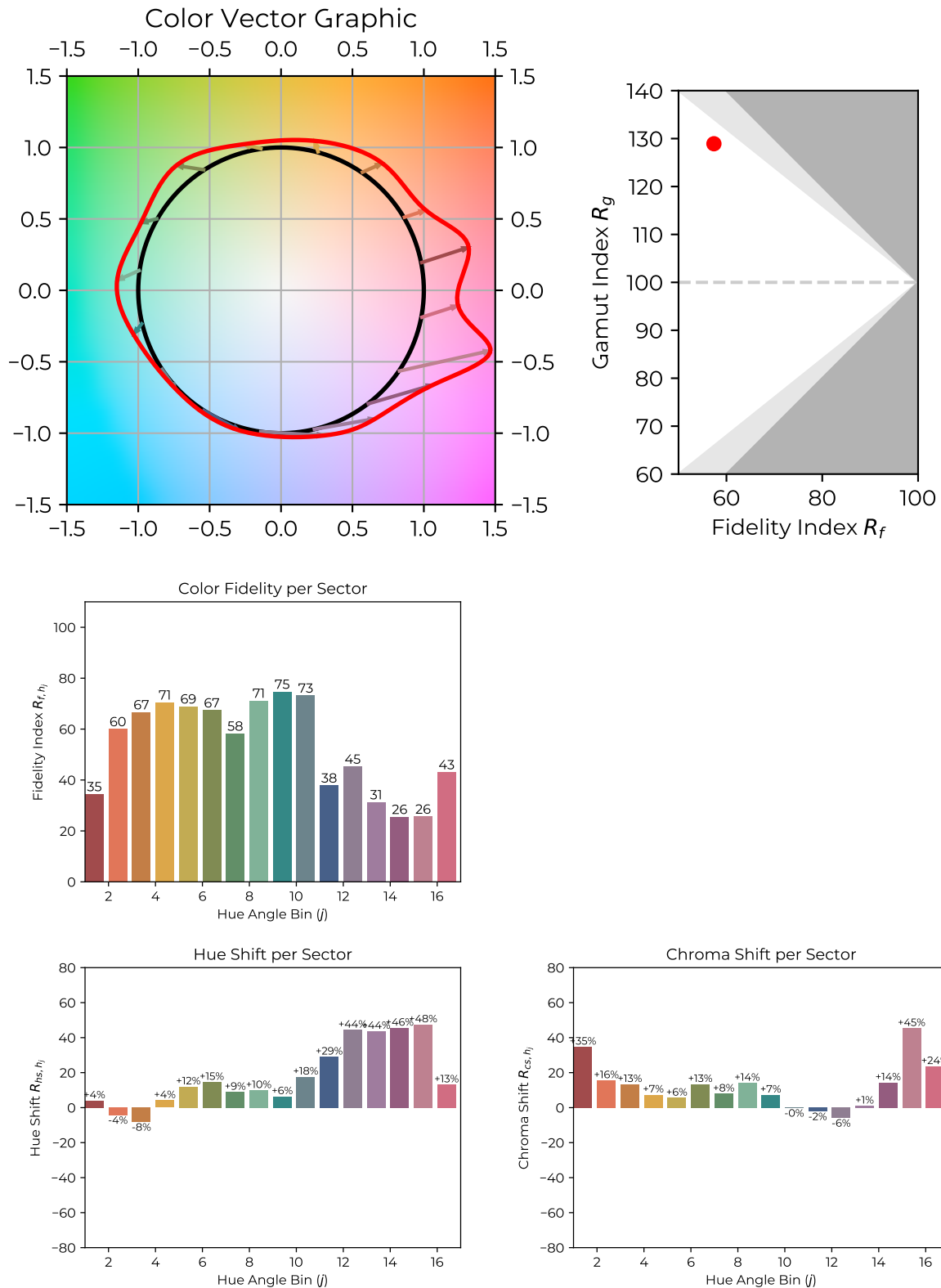
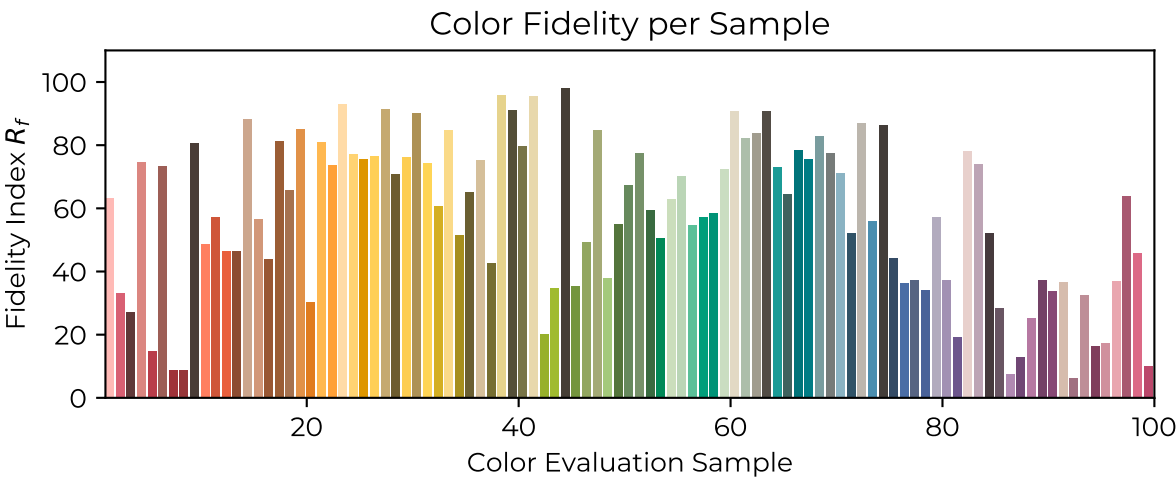


Figure 4: Measured Spectral Power Distribution of light source. RGBL Wide

## 2.1 TM-30-15 Detail Plots

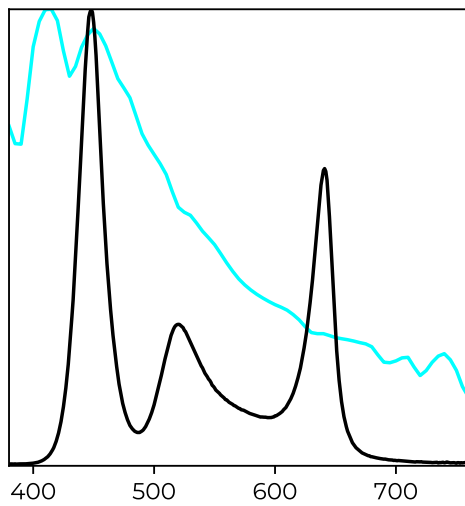
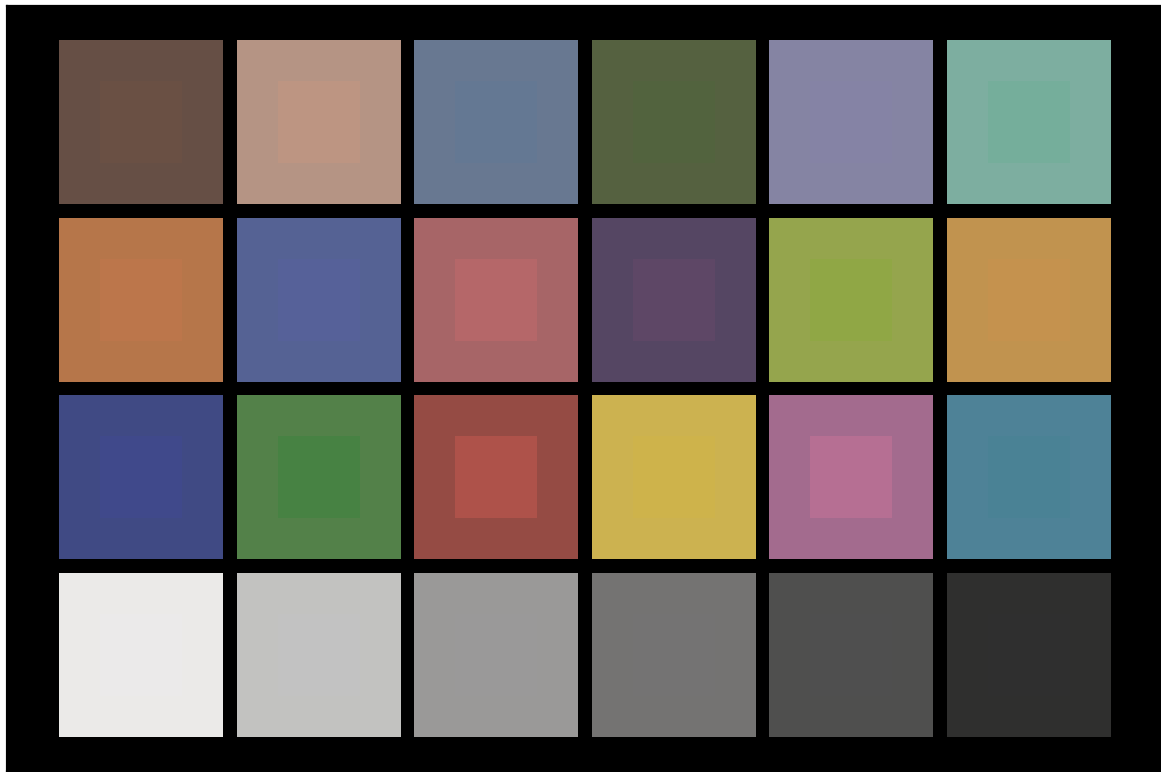






## 2.2 TLCI-2012 Results

Wild Bar 16 RGBL Wide : CCT = D20 590 – 6.9, TLCI = 40



Sector	Lightness	Chroma	Hue
R	8	8	8
R/Y	3	3	3
Y	1	1	1
Y/G	3	3	3
G	4	4	4
G/C	5	5	5
C	3	3	3
C/B	2	2	2
B	2	2	2
B/M	2	2	2
M	5	5	5
M/R	8	8	8